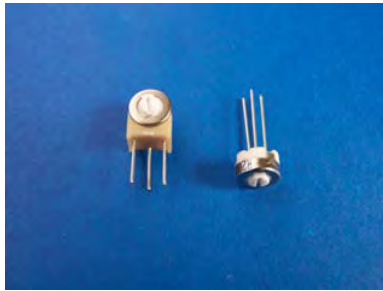


Sharma Potentiometers

WIW3329 Trimmer Potentiometer

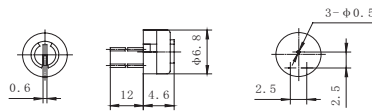


Features

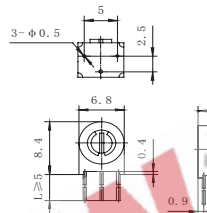
- Single Turn Round
- Cermet / Industrial / Sealed
- Top and side adjust types
(H,S,X,P most popular)

Electrical Characteristics

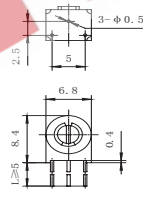
Standard Resistance Range
10 to 2 Megohms
(see standard resistance table)
Resistance Tolerance
±20% or ±10% std.
(tighter tolerance available)
Absolute Minimum Resistance
1% or 2 ohms max.
(whichever is greater)
Contact Resistance Variation
3% or 3 ohms max.
(whichever is greater)
Adjustability
Voltage ±0.05%
Resistance ±0.15%
Resolution
Infinite
Insulation Resistance
500 vdc
1,000 Megohms min.
Dielectric Strength
101.3 kPa 500 vac
8.5 kPa 315 vac
Adjustment Angle: 210° nom.



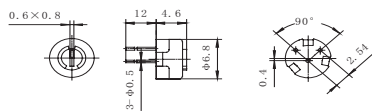
WIW3329H



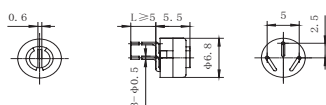
WIW3329S



WIW3329X

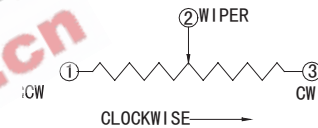
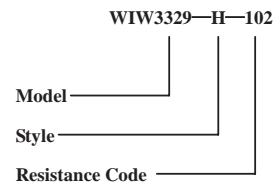


WIW3329H-1



WIW3329P

How to order



Standard Resistance Table

Resistance (ohm)	Resistance Code
10	100
20	200
50	500
100	101
200	201
500	501
1,000	102
2,000	202
5,000	502
10,000	103
20,000	203
25,000	253
50,000	503
100,000	104
200,000	204
250,000	254
500,000	504
1,000,000	105
2,000,000	205

Special resistance available

Detail Specification: Q/R Y237-2000