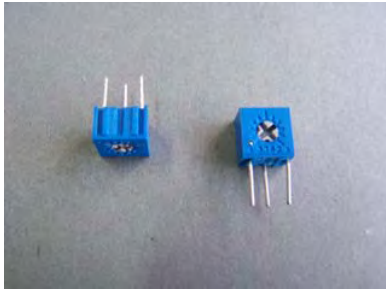


# Sharma Potentiometers

## WIW3362 Trimmer Potentiometer



### Features

- 6mm Single Turn
- Cermet / Industrial / Sealed
- Top and side adjust types (P,U, W,S most popular)

### Electrical Characteristics

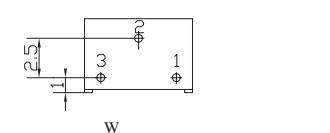
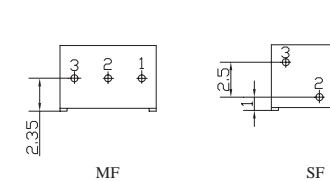
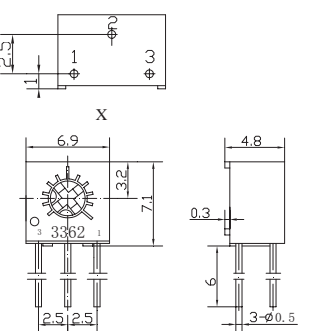
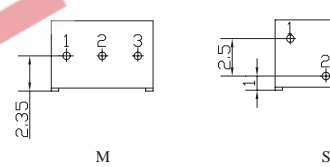
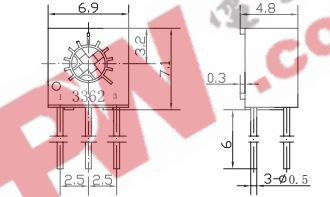
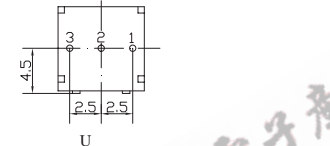
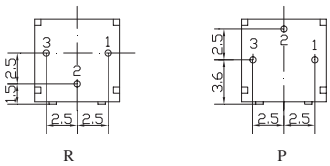
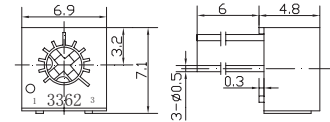
Standard Resistance Range  
100 to 2 Megohms  
(see standard resistance table)  
Resistance Tolerance:  $\pm 10\%$  std.  
(tighter tolerance available)  
Absolute Minimum Resistance:  
1% or 2 ohms max.  
(whichever is greater)  
Contact Resistance Variation  
3% or 3 ohms max.  
(whichever is greater)  
Adjustability  
Voltage  $\pm 0.05\%$   
Resistance  $\pm 0.15\%$   
Resolution: Infinite  
Insulation Resistance  
500 vdc  
1,000 Megohms min.  
Dielectric Strength  
101.3 kPa 500 vac  
8.5 kPa 315 vac  
Adjustment Angle:  $210^\circ$  nom.

### Environmental Characteristics

Power Rating (250 volts max.)  
0.5 watt ( $70^\circ\text{C}$ ), 0 watt ( $125^\circ\text{C}$ )  
Temperature Range  
 $-55^\circ\text{C}$  to  $+125^\circ\text{C}$   
Temperature Coefficient:  $\pm 100\text{ppm}/^\circ\text{C}$   
Vibration:  $98\text{ m/s}^2$   
(1%  $\Delta$  TR; 2%  $\Delta$  VR)  
Shock:  $390\text{ m/s}^2$   
(1%  $\Delta$  TR; 1%  $\Delta$  VR)  
Load Life  
1,000 hours 0.5 watt @  $70^\circ\text{C}$   
(3%  $\Delta$  TR; 4% or 4 ohm)  
Rotational Life: 200 cycles  
(3%  $\Delta$  TR; 4% or 4 ohm.)

### Physical Characteristics

Mechanical Angle  
 $250^\circ$  nom.  
Torque  
20 mN  $\cdot$  m max.  
Stop Strength  
50 mN  $\cdot$  m min.  
Terminals  
Solderable pins  
Standard Packaging  
50 pcs. per tube



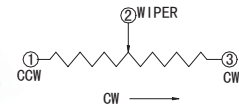
### How to order

WIW3362-P-102

Model

Style

Resistance Code



### Standard Resistance Table

Resistance (Ohms)	Resistance Code
100	101
200	201
500	501
1,000	102
2,000	202
5,000	502
10,000	103
20,000	203
25,000	253
50,000	503
100,000	104
200,000	204
250,000	254
500,000	504
1,000,000	105
2,000,000	205

Special resistance available

Detail Specification: Q/Ry260A-2000