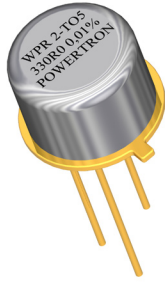


# WPR 2-TO5

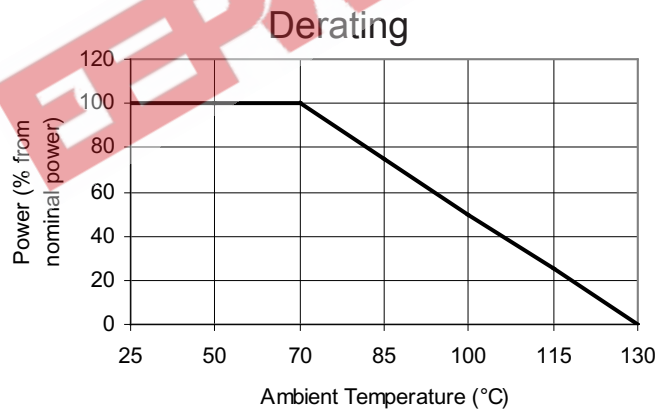
Special Resistors



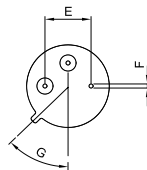
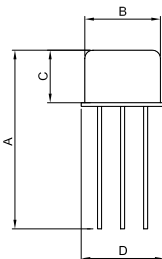
- Resistances from 50 Ohm to 600 kOhms
- Power Rating to 0.25 Watt
- Resistance Tolerances to  $\pm 0.01\%$
- TCR to  $\pm 5\text{ppm/K}$
- Load Stability to 0.1%
- Hermetically Sealed

## SPECIFICATIONS

Type	WPR 2-TO5
Resistance Range	50 Ohms to 600 kOhms Other values upon request
Power rating (70°C)	0.25 W
Tolerances	0.01% / 0.1% / 0.25% / 0.5% / 1% Other tolerances upon request
Stability	0.1%
Temperature Coefficient	$\pm 5\text{ppm/K}$ (-40 to +125°C)
Thermal EMF	$< 0.1\mu\text{V/K}$
Operating Temperature Range	-55 to 130°C
Resistor Material	NiCr
Connector Material	Cu / gold-coat
Terminals	2



## Dimensions



Dimension	mm	tol. (±mm)	inches	tol. (±inches)
A	19.40	1.0	0.76	0.039
B	8.15	0.2	0.32	0.008
C	5.80	0.1	0.23	0.004
D	9.13	0.2	0.36	0.008
E	5.08	0.1	0.20	0.004
F	Ø0.45	0.1	Ø0.018	0.004
G	45°	30'	45°	30'

## Ordering Information

Part Number - Resistance - Tolerance WPR 2-TO5 330Ohms 0.01%

Willow Technologies Ltd. Shawlands Court, Newchapel Road, Lingfield, Surrey, RH7 6BL, United Kingdom.

+44 (0) 1342 835234 +44 (0) 1342 834306 [info@willow.co.uk](mailto:info@willow.co.uk) <http://www.willow.co.uk>

rev. 03/2006A