

High Voltage Rectifiers - Surface Mount

150mA - 500mA • 30ns - 70ns • Hermetic

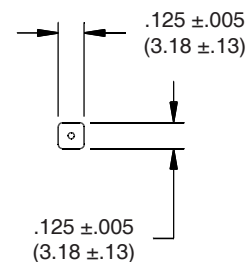
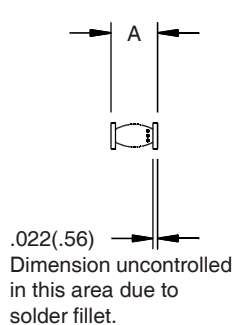
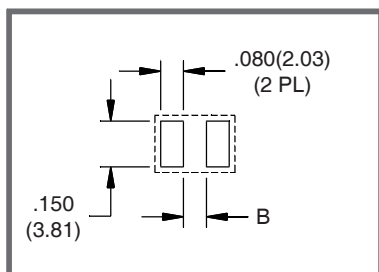
ELECTRICAL CHARACTERISTICS AND MAXIMUM RATINGS

Part Number	Working Reverse Voltage (V _{rwm})	Average Rectified Current (I _o)		Reverse Current @ V _{rwm} (I _r)		Forward Voltage (V _f)		1 Cycle Surge Current t _p =8.3ms (I _{fsm})	Repetitive Surge Current (I _{frm})	Reverse Recovery Time (3) (T _{rr})	Thermal Impd. θ _{J-c}	Junction Cap. @50VDC @1kHz (C _j)
		55°C(1)	100°C(2)	25°C	100°C	25°C		25°C	25°C	25°C	25°C	25°C
	Volts	mA	mA	µA	µA	Volts	mA	Amps	Amps	ns	°C/W	pF
X20FF3L X50FF3L	2000 5000	420 150	210 75	1.0 1.0	20 20	7.5 12.5	420 150	16 10	3.0 1.0	30 30	5.0 5.0	4.0 3.0
X20FF5L X50FF5L	2000 5000	420 150	210 75	1.0 1.0	20 20	7.5 12.5	420 150	16 10	3.0 1.0	50 50	5.0 5.0	4.0 3.0
1N6521U 1N6523U 1N6525U	2000 3000 5000	500 250 150	250 125 75	0.5 0.5 0.5	20 20 20	3.0 5.0 7.0	500 250 150	25 15 10	5.0 3.0 2.0	70 70 70	6.0 6.0 6.0	8.0 4.0 3.0

(1)TC=55°C (2)TC=100°C (3)I_f=125mA, I_r=250mA, I_{rr}=63mA *Op. Temp.= -65°C to +175°C Stg. Temp.= -65°C to +200°C

Part	A	B
X20FF3L	.275 ±.010 (6.99 ±.25)	.180(4.57)
X50FF3L	.310 ±.010 (7.87 ±.25)	.215(5.46)
X20FF5L	.265 ±.010 (6.73 ±.25)	.170(4.32)
X50FF5L	.300 ±.010 (7.62 ±.25)	.205(5.21)
1N6521U	.265 ±.010 (6.73 ±.25)	.170(4.32)
1N6523U	.280 ±.010 (7.11 ±.25)	.185(4.70)
1N6525U	.300 ±.010 (7.62 ±.25)	.205(5.21)

Markings:
Three Dots for polarity.



Dimensions: In. (mm) • All temperatures are ambient unless otherwise noted. • Data subject to change without notice.



VOLTAGE MULTIPLIERS INC.
8711 W. Roosevelt Ave.
Visalia, CA 93291

TEL. 559-651-1402
FAX 559-651-0740

www.voltagemultipliers.com
www.highvoltagepowersupplies.com