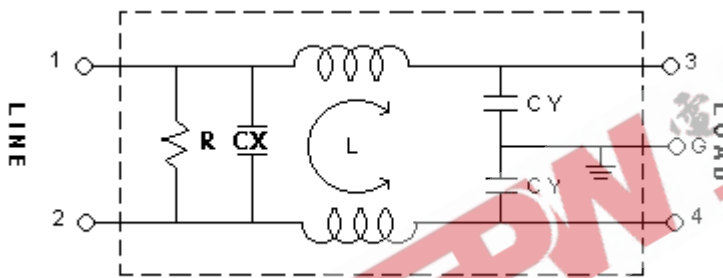


OPERATING TEMPERATURE		-25 ~ +85C	-25 ~ +85C	-25 ~ +85C	-25 ~ +85C
ATTENUATION	NORMAL MODE 25dbMIN	0.50 ~ 50MHZ	0.70 ~ 40MHZ	1.00 ~ 50MHZ	1.50 ~ 50MHZ
	COMMON MODE 25dbMIN	0.10 ~ 50MHZ	0.20 ~ 35MHZ	0.70 ~ 50MHZ	1.50 ~ 50MHZ
CX		0.1uF	0.1uF	0.1uF	0.1uF
CY		3300pF*2	3300pF*2	3300pF*2	3300pF*2
INDUCTANCE		3.7mH*2	1.8mH*2	0.7mH*2	0.3mH*2
RESISTANCE		1.5MOHM	1.5MOHM	1.5MOHM	1.5MOHM

### 3. NOISE ATTENUATION (dB)

COMMON MODE (LINE TO GROUND) IN 50 OHM SYSTEM							
TYPE	CURRENT	FREQUENCY-MHZ					
	RATING	0.15	0.5	1.0	5.0	10.0	30.0
YF01T6	1A	26	39	43	44	50	26
YF03T6	3A	20	32	36	35	26	18
YF06T6	6A	12	20	25	38	44	39
YF10T6	10A	6	15	21	34	41	35
DIFFERENTIAL MODE (LINE TO LINE) IN 50 OHM SYSTEM							
YF01T6	1A	8	19	27	44	45	22
YF03T6	3A	7	17	23	37	38	18
YF06T6	6A	6	16	21	45	46	37
YF10T6	10A	4	13	20	43	46	35

### 4. CIRCUIT



### 5. DIMENSION(mm)

YF01T8~YF10T8

