

High Voltage Rectifiers - Formed Lead

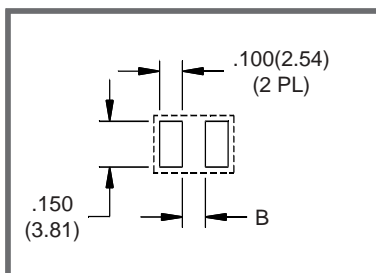
0.8A - 3.5A • 30ns - 70ns • Hermetic

ELECTRICAL CHARACTERISTICS AND MAXIMUM RATINGS

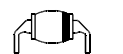
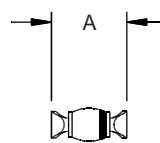
| Part Number | Working Reverse Voltage (V _{rwm}) | Average Rectified Current (I _o) | | Reverse Current @ V _{rwm} (I _r) | | Forward Voltage (V _f) | | 1 Cycle Surge Current t _p =8.3ms (I _{fsm}) | Repetitive Surge Current (I _{frm}) | Reverse Recovery Time (3) (T _{rr}) | Thermal Impd. θ _{J-C} | Junction Cap. @50VDC @1kHz (C _j) |
|----------------------------------|--|--|-------------------|---|----------------|--------------------------------------|-------------------|---|---|--|-----------------------------------|---|
| | | 55°C(1) | 100°C(2) | 25°C | 100°C | 25°C | | 25°C | 25°C | 25°C | 25°C | 25°C |
| | Volts | Amps | Amps | µA | µA | Volts | Amps | Amps | Amps | ns | °C/W | pF |
| Z20FF3LL Z50FF3LL | 2000 5000 | 2.0 0.8 | 1.2 0.4 | 1.0 1.0 | 25 25 | 6.0 12.5 | 0.75 0.36 | 65 22 | 10 4 | 30 30 | 5.0 5.0 | 20 16 |
| Z20FF5LL Z50FF5LL | 2000 5000 | 2.0 0.8 | 1.2 0.4 | 1.0 1.0 | 25 25 | 6.0 12.5 | 0.75 0.36 | 65 22 | 10 4 | 50 50 | 5.0 5.0 | 20 16 |
| 1N6513LL 1N6515LL 1N6517LL | 2000 3000 5000 | 3.5 2.5 1.5 | 2.4 1.5 1.0 | 1.0 1.0 1.0 | 25 25 25 | 3.5 6.0 8.0 | 2.0 1.5 1.0 | 100 60 40 | 15 10 8 | 70 70 70 | 5.0 5.0 5.0 | 25 20 16 |

(1)TC=55°C (2)TC=100°C (3)I_f=0.5A, I_r=1.0A, I_{rr}=0.25A *Op. Temp.= -65°C to +175°C Stg. Temp.= -65°C to +200°C

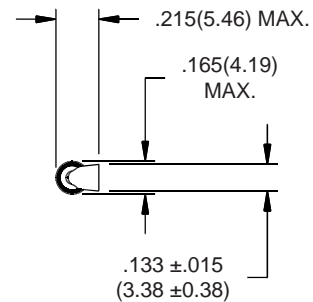
| Part | A | B |
|----------------------|------------------------------------|----------------|
| Z20FF3LL Z20FF5LL | .350(8.89) MAX. .320(8.13) MIN. | .220 (5.59) |
| Z50FF3LL Z50FF5LL | .390(9.91) MAX. .350(8.89) MIN. | .260 (6.60) |
| 1N6513LL | .340(8.64) MAX. .320(8.13) MIN. | .210 (5.33) |
| 1N6515LL | .360(9.14) MAX. .340(8.64) MIN. | .230 (5.84) |
| 1N6517LL | .380(9.65) MAX. .350(8.89) MIN. | .250 (6.35) |



Markings:
Cathode band.



.022 ± .003
(.56 ± .08)
Dimension uncontrolled
in this area due to
solder fillet.



Dimensions: In. (mm) • All temperatures are ambient unless otherwise noted. • Data subject to change without notice.



VOLTAGE MULTIPLIERS INC.
8711 W. Roosevelt Ave.
Visalia, CA 93291

TEL. 559-651-1402
FAX 559-651-0740

www.voltagemultipliers.com
www.highvoltagepowersupplies.com